

\$649,000 - 8 Cambria Place, Strathmore

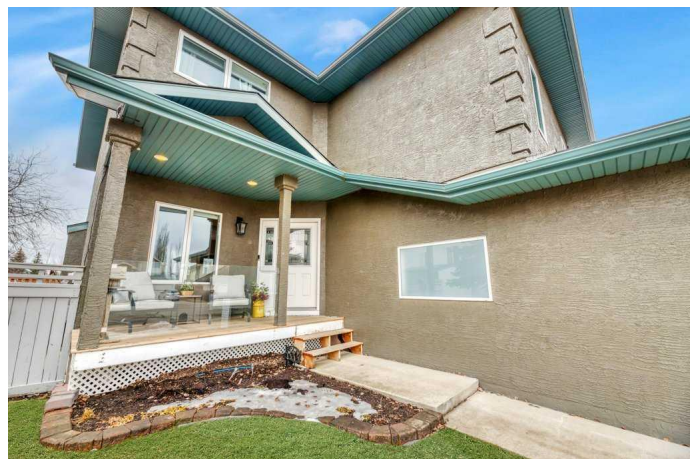
MLS® #A2206757

\$649,000

5 Bedroom, 4.00 Bathroom, 2,170 sqft
Residential on 0.11 Acres

Cambridge Glen, Strathmore, Alberta

Welcome to this stunning, fully finished 5 bedroom, 3 bathroom home nestled in the sought-after community of Cambridge Glen. Extensively renovated with thoughtful detail throughout, this home offers both style and function for modern family living. Step into the grand entryway with soaring ceilings that flow seamlessly into the open-concept main floor. The spacious living room features a cozy gas fireplace with a stone surround, perfect for relaxing or entertaining. The kitchen boasts quartz countertops, an island with electric cooktop, upgraded appliances, two pantries, & a large dining area with direct access to the perfectly landscaped south-facing backyard. Tucked away from the main living area is a convenient two-piece bath & a main-floor laundry room, complete with a handy laundry chute. Upstairs, the unique split floor plan offers exceptional versatility. One side features an impressive bonus room with vaulted ceilings, a second gas fireplace, & built-in cabinetry. On the other side, you'll find three generously sized bedrooms, including a luxurious primary suite that feels like your own private spa. Enjoy the spacious walk-in closet and a beautifully finished ensuite featuring a freestanding soaker tub—pure bliss. Bedroom #3 is currently being used as an office & has handy built-in shelving units. The spacious shared washroom has also been given a facelift! The fully finished basement adds even more living space with 2 large bedrooms, each with



walk-in closets, a comfortable family room, & a modern 3 piece bathroom.

Step outside to your backyard oasis, backing onto green space & a park. Relax in the hot tub, entertain on the wrap-around deck or the stamped concrete patio, and take advantage of the shed and lean-to for additional seating or storage.

Additional features include a heated garage, central air conditioning, and underground sprinklers to keep your lawn lush all summer long. This home is the perfect blend of luxury, comfort, and functionality. A must-see!

Built in 1996

Essential Information

MLS® #	A2206757
Price	\$649,000
Bedrooms	5
Bathrooms	4.00
Full Baths	3
Half Baths	1
Square Footage	2,170
Acres	0.11
Year Built	1996
Type	Residential
Sub-Type	Detached
Style	2 Storey
Status	Active

Community Information

Address	8 Cambria Place
Subdivision	Cambridge Glen
City	Strathmore
County	Wheatland County
Province	Alberta
Postal Code	T1P 1L9

Amenities

Parking Spaces	4
Parking	Double Garage Attached, Heated Garage
# of Garages	2

Interior

Interior Features	Built-in Features, Central Vacuum, Closet Organizers, High Ceilings, Kitchen Island, Open Floorplan, Pantry, Quartz Counters, Soaking Tub, Storage, Vinyl Windows, Walk-In Closet(s), Beamed Ceilings
Appliances	Built-In Electric Range, Central Air Conditioner, Dishwasher, Electric Cooktop, Microwave, Refrigerator, Washer/Dryer, Window Coverings, Trash Compactor
Heating	Forced Air
Cooling	Central Air
Fireplace	Yes
# of Fireplaces	3
Fireplaces	Electric, Gas, Great Room, Living Room, Master Bedroom
Has Basement	Yes
Basement	Finished, Full

Exterior

Exterior Features	Playground, Private Yard
Lot Description	Back Yard, Backs on to Park/Green Space, Few Trees, Front Yard, Garden, Lawn, Low Maintenance Landscape, No Neighbours Behind, Underground Sprinklers
Roof	Asphalt Shingle
Construction	Stucco, Wood Frame
Foundation	Poured Concrete

Additional Information

Date Listed	March 28th, 2025
Days on Market	17
Zoning	R1

Listing Details

Listing Office	RE/MAX Key
----------------	------------

Data is supplied by Pillar 9â„¢ MLSÂ® System. Pillar 9â„¢ is the owner of the copyright in its MLSÂ® System. Data is deemed reliable but is not guaranteed accurate by Pillar 9â„¢. The trademarks MLSÂ®, Multiple Listing ServiceÂ® and the associated logos are owned by The Canadian Real Estate Association (CREA) and identify the quality of services provided by real estate professionals who are members of CREA. Used under license.