

\$799,000 - 200a Centre Street Se, Calgary

MLS® #A2194322

\$799,000

0 Bedroom, 0.00 Bathroom,
Commercial on 0.00 Acres

Chinatown, Calgary, Alberta

Prime Downtown Calgary Investment
Opportunity!

Ideal for Owner-Users or Investors, this fully renovated 2-storey retail/office building is move-in ready! Remodeled in 2023, this charming brick building features a modern open-concept design and can be easily converted into two separate rental units—one for the upper level and the other for the main floor and basement.

Fantastic Location with High Visibility!

With an attractive storefront and heavy foot & vehicle traffic, this property is perfectly positioned for maximum exposure.

Building Details:

â€¢ Total Size: 1700 sq. ft.

â€¢ Main Floor & Upper Level

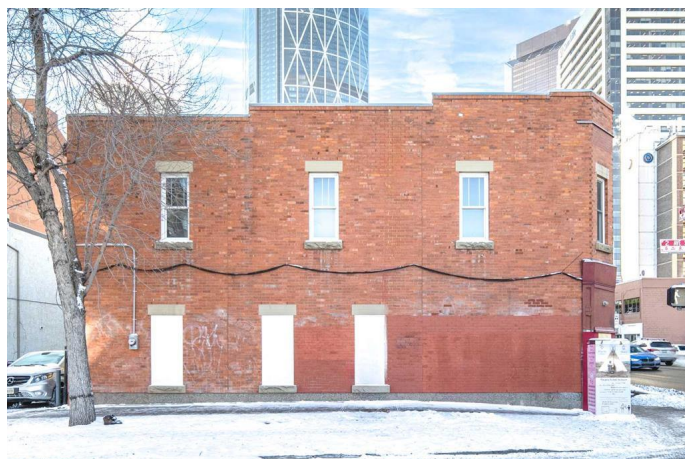
â€¢ 130 sq m lot

â€¢ Basement: Over 450 sq. ft. of additional space

â€¢ Parking: 3 dedicated stalls

â€¢ Status: Vacant & Show-Perfect!

Don't miss out on this exceptional downtown opportunity!



Built in 1905

Essential Information

MLS® # A2194322

Price \$799,000

Bathrooms 0.00

Acres	0.00
Year Built	1905
Type	Commercial
Sub-Type	Mixed Use
Status	Active

Community Information

Address	200a Centre Street Se
Subdivision	Chinatown
City	Calgary
County	Calgary
Province	Alberta
Postal Code	T2G 2B6

Interior

Heating	Forced Air, Natural Gas
---------	-------------------------

Exterior

Construction	Brick
--------------	-------

Additional Information

Date Listed	February 12th, 2025
Days on Market	57
Zoning	DC

Listing Details

Listing Office	Homecare Realty Ltd.
----------------	----------------------

Data is supplied by Pillar 9â„¢ MLSÂ® System. Pillar 9â„¢ is the owner of the copyright in its MLSÂ® System. Data is deemed reliable but is not guaranteed accurate by Pillar 9â„¢. The trademarks MLSÂ®, Multiple Listing ServiceÂ® and the associated logos are owned by The Canadian Real Estate Association (CREA) and identify the quality of services provided by real estate professionals who are members of CREA. Used under license.