

\$159,000 - 123 Restaurant Street Ne, Calgary

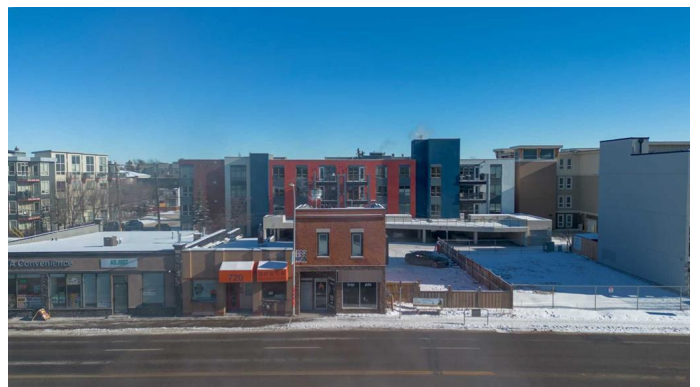
MLS® #A2193707

\$159,000

0 Bedroom, 0.00 Bathroom,
Commercial on 0.00 Acres

Renfrew, Calgary, Alberta

Hereâ€™s your chance to own a modern, turnkey restaurant with 30+ seats and 6 parking stalls in a prime, high-traffic commercial location. The restaurant features a sleek, open-concept layout with large display windows that let in an abundance of natural light, creating a bright and welcoming atmosphere. The fully stocked kitchen is ready to go, equipped with top-of-the-line appliances and all the necessary tools to start cooking right away. Whether you want to continue serving shawarma or pivot to a completely different cuisine, this versatile space gives you endless possibilities. Conveniently located near major roads, public transit, and local amenities, this location ensures great exposure to both foot and vehicle traffic. The ample parking and move-in-ready space make this an exceptional opportunity for anyone looking to establish their business in a sought-after area. Don't miss out on this opportunity!



Built in 1913

Essential Information

MLS® #	A2193707
Price	\$159,000
Bathrooms	0.00
Acres	0.00
Year Built	1913
Type	Commercial

Sub-Type	Business
Status	Active

Community Information

Address	123 Restaurant Street Ne
Subdivision	Renfrew
City	Calgary
County	Calgary
Province	Alberta
Postal Code	T2E 3J4

Amenities

Parking Spaces	6
----------------	---

Additional Information

Date Listed	February 15th, 2025
Days on Market	63

Listing Details

Listing Office	PropZap Realty
----------------	----------------

Data is supplied by Pillar 9â„¢ MLS® System. Pillar 9â„¢ is the owner of the copyright in its MLS® System. Data is deemed reliable but is not guaranteed accurate by Pillar 9â„¢. The trademarks MLS®, Multiple Listing Service® and the associated logos are owned by The Canadian Real Estate Association (CREA) and identify the quality of services provided by real estate professionals who are members of CREA. Used under license.