

# \$989,000 - 107, 2308 Centre Street Ne, Calgary

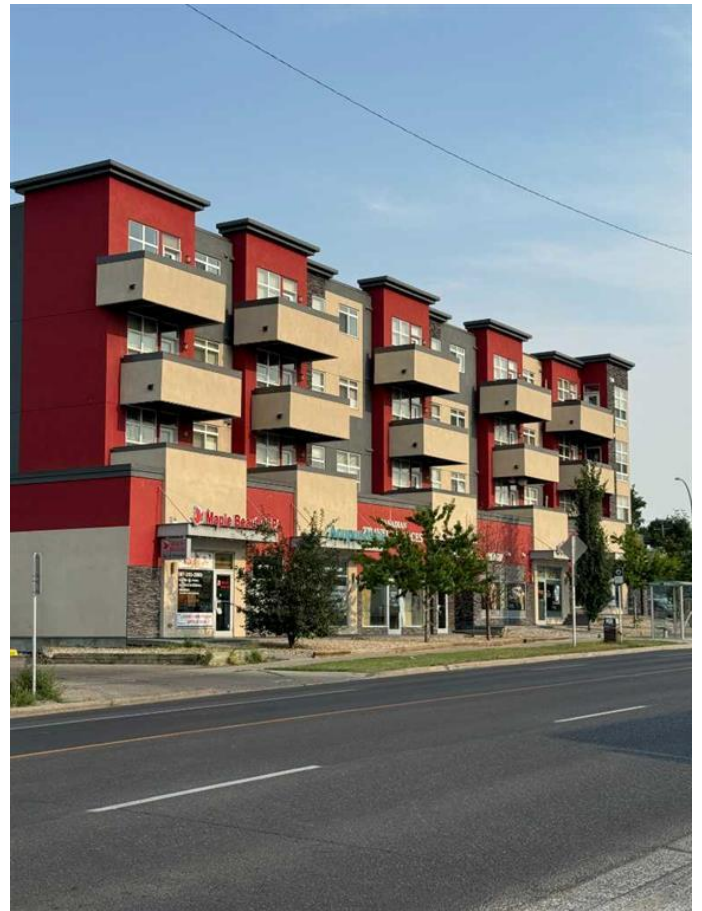
MLS® #A2153607

## \$989,000

0 Bedroom, 0.00 Bathroom,  
Commercial on 0.00 Acres

Tuxedo Park, Calgary, Alberta

It is rare to find a great almost NEW commercial unit facing the center street North! THREE titled parking stalls (1 underground, 2 above ground). Steel & Concrete solid building. Storefront entrance and windows framing glazed with clear glass sealed units with tempered glass. 11-foot high ceiling. Free parking at the rear of the building and on adjacent streets. Bus stop (Route #3) right in front of the building. Suitable for a variety of retail businesses or office uses. such as health services, convenience stores, pet stores or clinics, travel, and fitness etc. You won't find another similar newer retail property to purchase at such a CENTRAL location with multiple parking stalls. Please Book your private showing today!



Built in 2017

## Essential Information

|            |            |
|------------|------------|
| MLS® #     | A2153607   |
| Price      | \$989,000  |
| Bathrooms  | 0.00       |
| Acres      | 0.00       |
| Year Built | 2017       |
| Type       | Commercial |
| Sub-Type   | Retail     |
| Status     | Active     |

## Community Information

Address 107, 2308 Centre Street Ne  
Subdivision Tuxedo Park  
City Calgary  
County Calgary  
Province Alberta  
Postal Code T2E 2T7

### Amenities

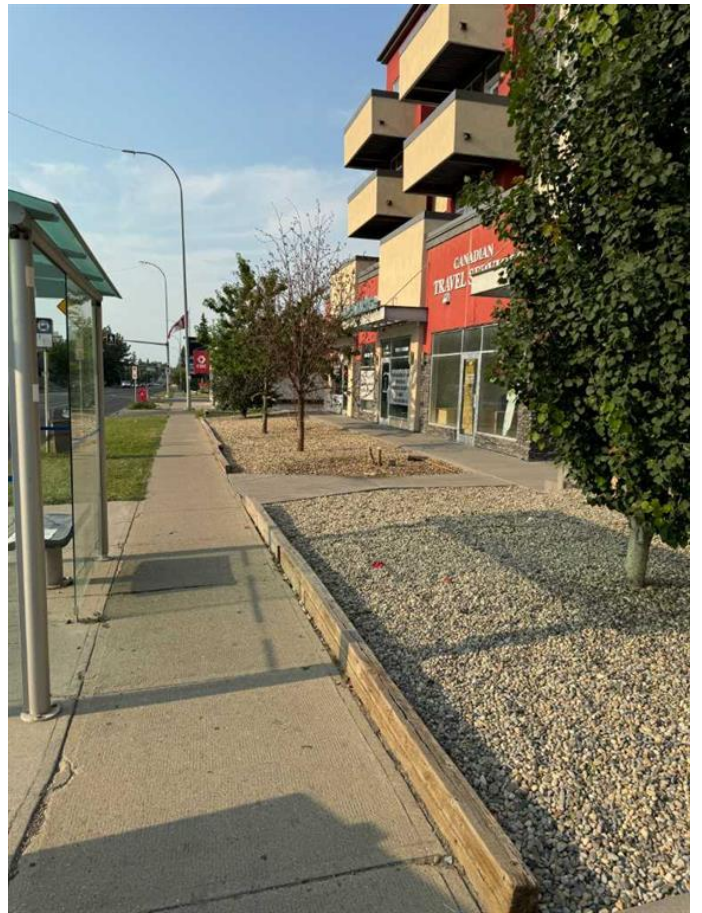
Parking Spaces 3

### Additional Information

Date Listed August 2nd, 2024  
Days on Market 245  
Zoning DC (pre 1P2007)

### Listing Details

Listing Office First Place Realty



Data is supplied by Pillar 9â„¢ MLSÂ® System. Pillar 9â„¢ is the owner of the copyright in its MLSÂ® System. Data is deemed reliable but is not guaranteed accurate by Pillar 9â„¢. The trademarks MLSÂ®, Multiple Listing ServiceÂ® and the associated logos are owned by The Canadian Real Estate Association (CREA) and identify the quality of services provided by real estate professionals who are members of CREA. Used under license.

